

Research Alert

Study on CytoQuel®

Available only through health care professionals.

RESEARCH EXECUTIVE SUMMARY

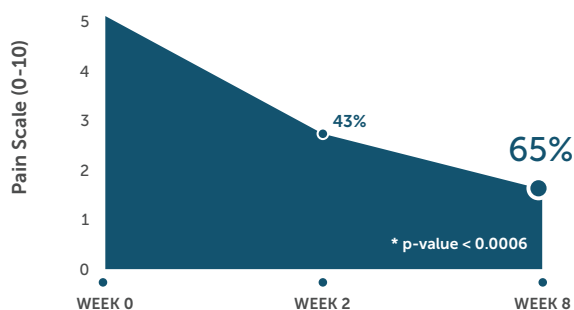
Participants with documented chronic pain for at least 6 months duration were given CytoQuel® for 8 weeks as part of a clinical study that was published in the Journal of Pain Research¹. Pain scoring and activities of daily living questionnaires were taken at baseline, 2 weeks, and 8 weeks. Measurements of ankle brachial index, blood pressure, vascular and cytokine markers were done along with the questionnaires.

Research Highlights:

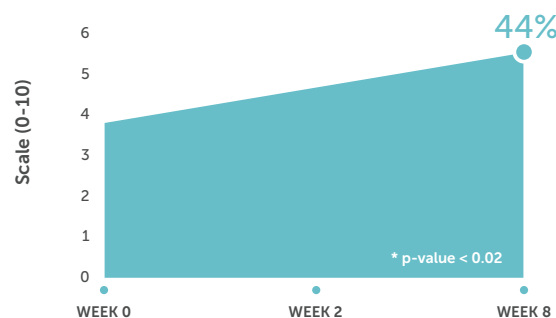
- **Pain***
 - 65% decrease in pain in 8 weeks ($p < 0.0006$)
- **Sleep***
 - 44% improvement in sleep quality in 8 weeks ($p < 0.02$)
- **Blood Pressure***
 - Ankle brachial index values decreased to normal values of 1.0 ($p < 0.01$)
- **MMP-9***
 - 9.6% reduction in two weeks ($p < 0.05$)
- **Vascular and Cytokine Markers***
 - Reductions in vWF (VonWillebrand Factor), fibrinogen, TNF-alpha, IL-1ra



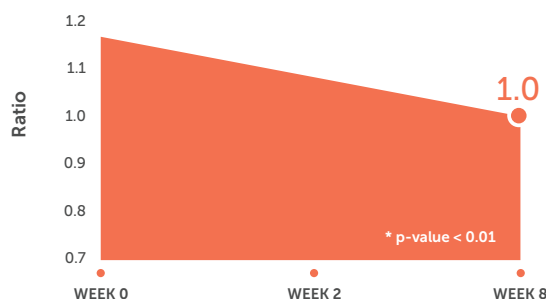
PAIN REDUCTION*



SLEEP IMPROVEMENT*



ANKLE BRACHIAL INDEX*



1. Journal of Pain Research (D Hamilton, G Jensen). Pain reduction and improved vascular health associated with daily consumption of an anti-inflammatory dietary supplement blend. J Pain Res. 2019; 12: 1497-1508.

*These statements have not been evaluated by the Food and Drug Administration. These products are not intended to diagnose, treat, cure or prevent any disease.

MORE

CLINICALLY RESEARCHED



Product No. RN145

CytoQuel[®]

Pro-inflammatory Cytokine Support

Physician-Requested Product Sheet

Supplement Facts		
Serving Size: 3 Capsules		
Servings Per Container: 30		
Amount Per Serving	%Daily Value**	
CQ™ Blend	1850 mg	†
Black Tea Extract (50% EGCG)		
N-Acetyl Cysteine		
CurcuWIN™ Turmeric Extract		
DeltaGold® Tocotrienols		
Resveratrol (Natural Trans-Resveratrol)		

** Percent Daily Values are based on a 2,000 calorie diet.
† Daily Value not established.

Other Ingredients: Vegetable capsule, L-leucine, silicon dioxide.

Manufactured without milk, eggs, fish, crustacean shellfish, tree nuts, peanuts, wheat, soy, corn and gluten. Produced in a GMP facility that may process other ingredients containing these allergens.

Features & Benefits

Current research has focused on the impact of pro-inflammatory cytokines on inflammation levels. During an infection, the body naturally produces pro-inflammatory cytokines as part of its defense mechanism. The healthy body balances pro-inflammatory cytokines with anti-inflammatory cytokines. However, if these pro-inflammatory cytokines (i.e. IL-1, IL-6, IL-8, IL-17, IL-23), Tumor Necrosis Factor-alpha (TNF-α), Nuclear Factor kappa Beta (NF-kβ) continue in the "on position" and inflammation levels remain high, adverse health may be the result.

CytoQuel[®] has been developed to promote healthy cytokine activity. Based on the latest published research, CytoQuel[®] offers you and your patients an effective new tool in the quest for healthy inflammation levels.

Each Capsule Includes:

Features	Constituents/Actions	Benefits*
CQ™ Blend	N-acetyl cysteine (NAC)	<ul style="list-style-type: none"> Promotes healthy NF-k Beta, IL-6, IL-8 levels
	Black Tea Extract	<ul style="list-style-type: none"> High level of the polyphenol, EGCG Promotes healthy levels of IL-23, which controls IL-17 levels Supports healthy levels of NF-k Beta, TNF- α, IL-1 beta, IL-6, IL-8 (Herxheimer reactions increase TNF- α, IL-6 & IL-8)
	CurcuWIN™ turmeric extract	<ul style="list-style-type: none"> Promotes healthy levels of IL-6, IL-17, IL-21 Published research demonstrating highest bioavailable form of tumeric CurcuWIN combines curcumin with a hydrophilic (allowing it to disperse in water) carrier, using the UltraSOL™ molecular dispersion technology. UltraSOL converts lipophilic (fat loving or fat absorbing) nutrients into water-dispersible ingredients.
	DeltaGold® Tocotrienols	<ul style="list-style-type: none"> 100% delta and gamma tocotrienols and no tocopherols (which may reduce the absorption of the potent tocotrienol compounds). Promotes healthy inhibition levels of NF-k Beta & nitric oxide
	Resveratrol (Natural Trans-Resveratrol)	<ul style="list-style-type: none"> Promotes healthy inhibition levels of TNF- α, IL-1 beta, IL-6 & NF-k Beta

Suggested Use

Take 3 capsules once per day with a meal. Sensitive patients may start with 1 capsule per day with a meal for the first week, and then move up to 3 capsules per day in week two and beyond. For best results take away from Vitamin E (tocopherol).

Cautions

If pregnant or nursing, consult your health care professional.

CytoQuel[®] is a registered trademark of Researched Nutritionals, LLC. All rights reserved.

* These statements have not been evaluated by the Food and Drug Administration. This product is not intended to diagnose, treat, cure or prevent any disease.

MORE



PO Box 19033, Marewa, Napier 4143, New Zealand • NZ 0800 439 633 • AU 1800 770 904
support@fxmed.co.nz • www.fxmed.co.nz

rev0420